



# DX360LCA-7M / DX360LC-7M

[Certified Model Name : DX360LCA-7M / DX360LC-7M]

CONTENTS	PAGE
1. GENERAL SPECIFICATION .....	3
2. ENGINE SYSTEM .....	5
- ENGINE PERFORMANCE CURVE .....	9
3. HYDRAULIC SYSTEM .....	11
- PUMP PERFORMANCE CURVE .....	15
4. SWING MECHANISM.....	16
5. TRAVEL SYSTEM.....	18
6. UNDER CARRIAGE .....	19
7. HYDRAULIC CYLINDERS.....	21
8. FRONT .....	22
9. DIMENSIONS AND WORKING RANGE.....	27
10. LIFTING CAPACITIES.....	30
11. PERFORMANCE DATA .....	30
12. NOISE LEVEL .....	30
13. SUB GROUP WEIGHT .....	31
14. USER SERVICE DATA.....	32
15. CIRCUITS.....	32
- HYDRAULIC CIRCUIT : 950102-00849B .....	32
- ELECTRIC CIRCUIT : 950102-00850A.....	32

MODEL	DX360LCA-7M DX360LC-7M	DWG No		2/32
-------	---------------------------	--------	--	------

# 1. GENERAL SPECIFICATION

1) for Tier2

ITEMS		UNIT	STD.	OPT. 1	OPT. 2	OPT. 3	OPT. 4
OPERATING WEIGHT		ton	37.6	37.5	37.5	37.5	-
ENGINE	RATED POWER (Gross)	kW/rpm	238/1800				
	MAX. TORQUE	N.m/rpm	1400/1200				
SYSTEM PRESSURE (Work / Travel)		bar	343(363)/343				
SWING SPEED (EFF. 98%)		rpm	9.3				
TRAVEL SPEED (High / Low ) (EFF. 98%)		km/h	5.5/3.4				
GRADEABILITY		%(deg)	70 (35°)				
GROUND PRESSURE		kg/cm <sup>2</sup>	0.72	0.72	0.72	0.72	-
DIGGING FORCE(ISO)	BUCKET (Nor. / Press Up)	ton	24.7/26.1	24.7/26.1	24.7/26.1	24.7/26.1	-
	ARM (Nor. / Press Up)	ton	17.9/19.0	22.1/23.4	15.1/16.0	22.1/23.4	-
WORKING RANGE	MAX. DIGGING REACH	mm	11,115	10,540	11,875	10,235	-
	MAX. LOADING HEIGHT	mm	7225	6,950	7,685	6,645	-
	MAX. DIGGING DEPTH	mm	7,485	6,885	8,237	6,665	-
	MAX. DIGGING HEIGHT	mm	10,215	9,910	10,715	9,585	-
	REAR SWING RADIUS	mm	3,530	3,530	3,530	3,530	-
	MIN. SWING RADIUS	mm	4,455	4,445	4,515	4,325	-
TRANSPORTATION DIMENSION	OVERALL LENGTH	mm	11,315	11,405	11,345	11,105	-
	OVERALL WIDTH (W/O Protector & Catwalk)	mm	3,280	3,280	3,280	3,280	-
	OVERALL HEIGHT	mm	3,420	3,640	3,565	3,705	-
	GROUND CLEARANCE (W/O Grouser)	mm	475	475	475	475	-
	TRACK HEIGHT (W/O Grouser)	mm	970	970	970	970	-
	TRACK LENGTH (With Grouser)	mm	4,960	4,960	4,960	4,960	-
	GROUSER HEIGHT	mm	36	36	36	36	-
	TRACK GAUGE	mm	2,680	2,680	2,680	2,680	-
	TUMBLER DISTANCE	mm	4,040	4,040	4,040	4,040	-
OPTION ATTACHMENT	BOOM	mm	6200 / 6500 / 6500 HD				
	ARM	mm	2600 / 3200 / 3950 / 3200 HD				
	BUCKET(SAE)	m <sup>3</sup>	GP : 1.25 / 1.28 Rock / 1.49 / 1.61 / 1.83				
			H Class : 1.44 / 1.66 / 1.81 / 2.03 / 2.32 H+ Class : 2.03				
			S Class : 1.56 / 1.77 / 1.92 / 2.22 S+ Class : 1.71				
			X Class : 1.56, 1.71				
	SHOE	mm	600 TG / 700 TG / 800 TG / 850 TG / 900 TG / 600 DG				
COUNTER WEIGHT	kg	7100					
Spec. Combination Criteria	STD	BOOM(6500 HD), ARM(3200 HD), BUCKET(1.81 H Class), SHOE(600 TG)					
	OPTION 1	BOOM(6500 HD), ARM(2600), BUCKET(2.03 H Class), SHOE(600 TG)					
	OPTION 2	BOOM(6500), ARM(3950), BUCKET(1.44 H Class), SHOE(600 TG)					
	OPTION 3	BOOM(6200), ARM(2600), BUCKET(2.03 H Class), SHOE(600 TG)					

MODEL	DX360LCA-7M DX360LC-7M	DWG No		3/32
-------	---------------------------	--------	--	------

## 2) for Tier3

ITEMS		UNIT	STD.	OPT. 1	OPT. 2	OPT. 3	OPT. 4
OPERATING WEIGHT		ton	37.7	37.6	37.6	37.5	-
ENGINE	RATED POWER (Gross)	kW/rpm	213/1900				
	MAX. TORQUE	N.m/rpm	1275/1500				
SYSTEM PRESSURE (Work / Travel)		bar	343(363)/343				
SWING SPEED (EFF. 98%)		rpm	9.3				
TRAVEL SPEED (High / Low ) (EFF. 98%)		km/h	5.5/3.4				
GRADEABILITY		%(deg)	70 (35°)				
GROUND PRESSURE		kg/cm <sup>2</sup>	0.73	0.72	0.72	0.72	-
DIGGING FORCE(ISO)	BUCKET (Nor. / Press Up)	ton	24.7/26.1	24.7/26.1	24.7/26.1	24.7/26.1	-
	ARM (Nor. / Press Up)	ton	17.9/19.0	22.1/23.4	15.1/16.0	22.1/23.4	-
WORKING RANGE	MAX. DIGGING REACH	mm	11,115	10,540	11,875	10,235	-
	MAX. LOADING HEIGHT	mm	7225	6,950	7,685	6,645	-
	MAX. DIGGING DEPTH	mm	7,485	6,885	8,237	6,665	-
	MAX. DIGGING HEIGHT	mm	10,215	9,910	10,715	9,585	-
	REAR SWING RADIUS	mm					-
	MIN. SWING RADIUS	mm	4,455	4,445	4,515	4,325	-
TRANSPORTATION DIMENSION	OVERALL LENGTH	mm	11,315	11,405	11,345	11,105	-
	OVERALL WIDTH (W/O Protector & Catwalk)	mm	3,280	3,280	3,280	3,280	-
	OVERALL HEIGHT	mm	3,420	3,640	3,565	3,705	-
	GROUND CLEARANCE (W/O Grouser)	mm	475	475	475	475	-
	TRACK HEIGHT (W/O Grouser)	mm	970	970	970	970	-
	TRACK LENGTH (With Grouser)	mm	4,960	4,960	4,960	4,960	-
	GROUSER HEIGHT	mm	36	36	36	36	-
	TRACK GAUGE	mm	2,680	2,680	2,680	2,680	-
	TUMBLER DISTANCE	mm	4,040	4,040	4,040	4,040	-
OPTION ATTACHMENT	BOOM	mm	6200 / 6500 / 6500 HD				
	ARM	mm	2600 / 3200 / 3950 / 3200 HD				
	BUCKET(SAE)	m <sup>3</sup>	GP : 1.25 / 1.28 Rock / 1.49 / 1.61 / 1.83				
			H Class : 1.44 / 1.66 / 1.81 / 2.03 / 2.32 H+ Class : 2.03				
			S Class : 1.56 / 1.77 / 1.92 / 2.22 S+ Class : 1.71				
			X Class : 1.56, 1.71				
	SHOE	mm	600 TG / 700 TG / 800 TG / 850 TG / 900 TG / 600 DG				
COUNTER WEIGHT	kg	7100					
Spec. Combination Criteria	STD	BOOM(6500 HD), ARM(3200 HD), BUCKET(1.81 H Class), SHOE(600 TG)					
	OPTION 1	BOOM(6500 HD), ARM(2600), BUCKET(2.03 H Class), SHOE(600 TG)					
	OPTION 2	BOOM(6500), ARM(3950), BUCKET(1.44 H Class), SHOE(600 TG)					
	OPTION 3	BOOM(6200), ARM(2600), BUCKET(2.03 H Class), SHOE(600 TG)					

MODEL

DX360LCA-7M  
DX360LC-7M

DWG No

4/32

## 2. ENGINE SYSTEM

### 1-1) ENGINE – Tier2

MAKER & MODEL	:	DOOSAN DX12
SUFFIX	:	DX12-MBE10
RATED HORSE POWER	:	238 kW @ 1,800 rpm (SAE J 1995,Gross)
		319 HP(324 PS) @ 1,800 rpm(SAE J 1995,Gross)
		233 kW @ 1,800 rpm (SAE J1349,net)
		312 HP(236 PS) @ 1,800 rpm (SAE J1349,net)
MAX. TORQUE	:	1,400 N.m @ 1,200 rpm
FUEL CONSUMPTION	:	214 g/kW.hr @ RATED SPEED(157 g/PS.hr)
TYPE	:	4-CYCLEWATER-COOLED WASTE GATE TURBOCHARGE MECHANICAL DIRECT INJECTION
DISPLACEMENT	:	11,051 cc
No. OF CYLINDER	:	6
BORE DIA. & STROKE	:	Φ123 x 155 mm
COMPRESSION RATIO	:	18.2:1
HIGH IDLE SPEED	:	2,000 + 50 rpm
LOW IDLE SPEED	:	1,000 ± 25 rpm
STARTING MOTOR	:	24 V x 7.0 kW
DRY WEIGHT	:	1024 kg

### 1-2) ENGINE – Tier3

MAKER & MODEL	:	DOOSAN DL08
SUFFIX	:	DL08-MCE01
RATED HORSE POWER	:	213 kW @ 1,900 rpm (SAE J 1995,Gross)
		286 HP(290 PS) @ 1,900 rpm(SAE J 1995,Gross)
		209 kW @ 1,900 rpm (SAE J1349,net)
		280 HP(283 PS) @ 1,900 rpm (SAE J1349,net)
MAX. TORQUE	:	1,275 N.m @ 1,500 rpm
FUEL CONSUMPTION	:	223 g/kW.hr @ RATED SPEED(164 g/PS.hr)
TYPE	:	4-CYCLEWATER-COOLED VARIABLE GEOMETRY TURBOCHARGE COMMON RAIL DIRECT INJECTION
DISPLACEMENT	:	7,640 cc
No. OF CYLINDER	:	6
BORE DIA. & STROKE	:	Φ108 x 139 mm
COMPRESSION RATIO	:	16.4:1
HIGH IDLE SPEED	:	2,000 ± 25 rpm
LOW IDLE SPEED	:	800 ± 10 rpm
STARTING MOTOR	:	24 V x 6.0 kW
DRY WEIGHT	:	770 kg

### 2) ALTERNATOR

MAKER	:	KBI Metal
VOLTAGE	:	24 V
RATING AMPERES	:	80 A

MODEL	DX360LCA-7M DX360LC-7M	DWG No		5/32
-------	---------------------------	--------	--	------

3) BATTERY

MAKER : DELKOR  
SYSTEM VOLTAGE : 24 V  
QUANTITY : 12 V x 2  
CAPACITY (AMP) : 150 AH

4) PUMP DRIVE

MAKER & MODEL : DAEJOONG PRE IND DJF-N165K-01  
DRIVE TYPE : FLEXIBLE COUPLING JOINT  
PERMISSIBLE TORQUE & RPM : 500 kgf.m, 3,600 rpm

5) AIR CLEANER

MAKER & MODEL : DONALDSON FRG15" SHORT AIR CLEANER  
TYPE : DOUBLE ELEMENT  
FILTRATION AREA : 14.7 m2 (OUTER), 1.85 m2 (INNER)  
SIZE (DIA.x LENGTH) : 381 mm x 530 mm  
FILTERING EFFICENCY : OVER 99.9% AT FULL LIFE

6-1) MUFFER – Tier2

TYPE : MUFFLER  
MAKER & MODEL : HANWOO  
SIZE (L X W X H) : 920 mm X 400 mm X 617 mm

6-2) MUFFER – Tier3

TYPE : MUFFLER  
MAKER & MODEL : HANWOO  
SIZE (L X W X H) : 847mm X 326mm X 672mm

MODEL	DX360LCA-7M DX360LC-7M	DWG No		6/32
-------	---------------------------	--------	--	------

7-1) FAN – Tier2

- FOR RADIATOR

TYPE : SUCKER, 9-BLADE, PLASTIC  
SIZE :  $\Phi$ 711.2 mm  
RPM AT RATED ENGINE RPM : 1,440 rpm  
PULLEY RATIO : 1 : 0.8

- FOR OIL COOLER

TYPE : SUCKER, 9-BLADE, PLASTIC  
SIZE :  $\Phi$ 711.2 mm  
RPM AT RATED ENGINE RPM : 1,450 rpm

7-2) FAN – Tier3

- FOR RADIATOR

TYPE : SUCKER, 9-BLADE, PLASTIC  
SIZE :  $\Phi$ 711.2 mm  
RPM AT RATED ENGINE RPM : 1,350  
PULLEY RATIO : 1:0.75

- FOR OIL COOLER

TYPE : SUCKER, 9-BLADE, PLASTIC  
SIZE :  $\Phi$ 711.2 mm  
RPM AT RATED ENGINE RPM : 1,450 rpm

8) RADIATOR

MAKER & MODEL : HAESONG  
TYPE : BAR & PLATE

9) OIL COOLER

MAKER & MODEL : HAESONG  
TYPE : BAR & PLATE

MODEL	DX360LCA-7M DX360LC-7M	DWG No		7/32
-------	---------------------------	--------	--	------

10) CHARGE AIR COOLER

MAKER & MODEL : HAESONG  
TYPE : BAR & PLATE

11) FUEL COOLER

MAKER & MODEL : HAESONG  
TYPE : BAR & PLATE

12) FILTERS

12-1) FUEL MAIN FILTER

MAKER & TYPE : DOOSAN / SPIN ON TYPE  
SIZE : D107.7 x H205 mm  
FLOW RATE : 454L/H  
EFFICIENCY : MIN. 98% @ 4 µm<sup>◎</sup>, (ACC. TO ISO19438)

12-2) WATER SEPARATOR FILTER

MAKER & MODEL : MANN+HUMMEL / PL420(WITH ETP, HEATER, WIF)  
SIZE : H392xW152xD137mm  
NOMINAL FLOW RATE : 420L/H  
FILTRATION EFFICIENCY : 95% @ 30 µm (ACC. TO ISO19438)  
WATER SEPARATION EFFICIENCY : > 93% (ACC. TO ISO16332)  
ETP FLOW RATE : 200L/H  
ETP MAX PRESSURE : 1.5 BAR

12-3) ENGINE OIL FILTER

MAKER & TYPE : DOOSAN / COMBINATION TYPE  
SIZE : D118.4 x H249.3 mm  
FLOW RATE : 131L/MIN  
EFFICIENCY : MIN. 99% @ 30 µm / MIN 98% @ 10 µm

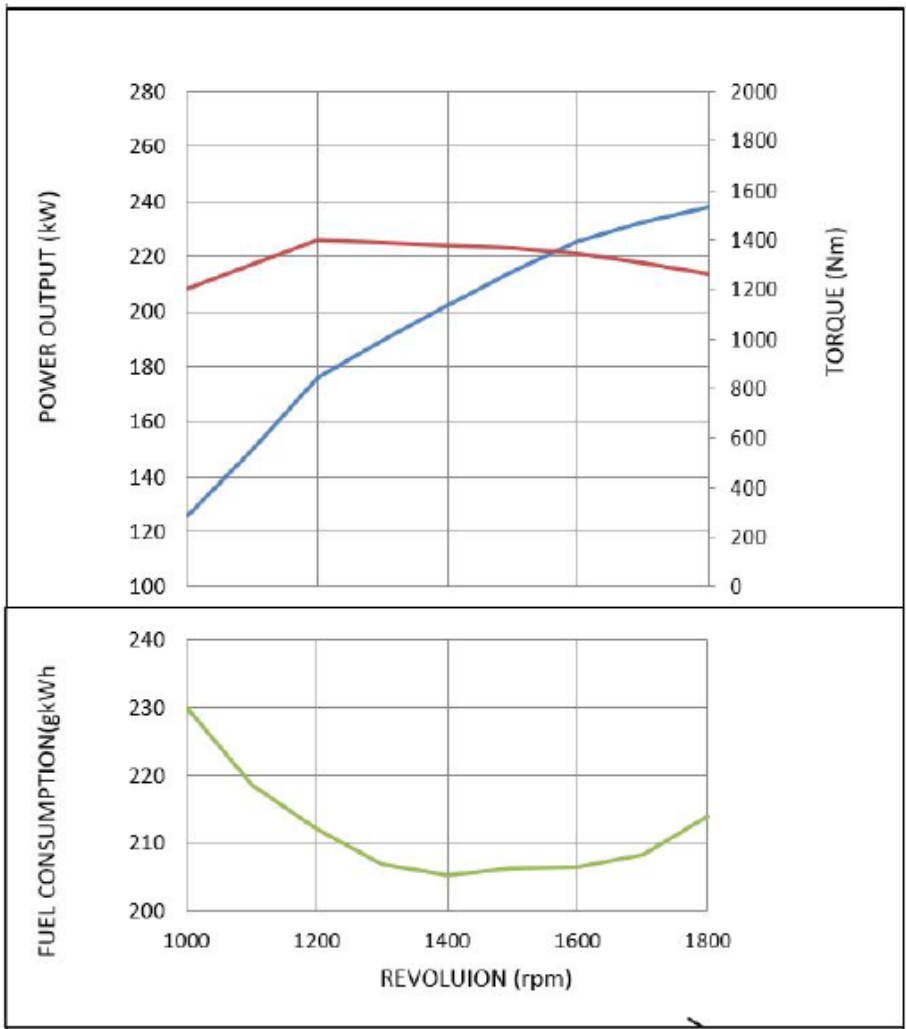
MODEL	DX360LCA-7M DX360LC-7M	DWG No		8/32
-------	---------------------------	--------	--	------



- ENGINE PERFORMANCE CURVE Tier2

CONDITION	SPECIFICATION
BAROMETIC PRESSURE	760 mmHg (25°C)
COOLING FAN	X
ALTERNATOR	X
AIR CLEANER	O
MUFFLER	O

PERFORMANCE STANDARARD	SAE J 1995
POWER (MAX , RATED)	238 kW / 1,900 rpm
MAX. TORQUE	1,400 N.m/ 1,200 rpm
FUEL CONSUMPTION (MAX , RATED)	214 g/kW.hr(157 g/ps.hr)

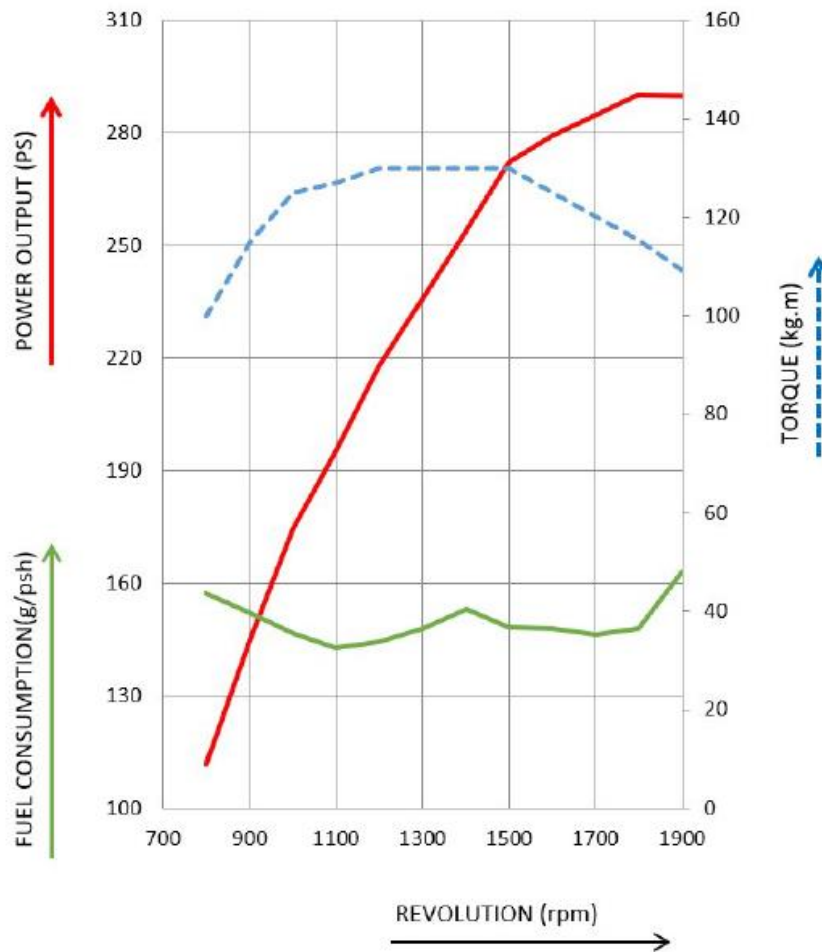


MODEL	DX360LCA-7M DX360LC-7M	DWG No	9/32
-------	---------------------------	--------	------

- ENGINE PERFORMANCE CURVE Tier3

CONDITION	SPECIFICATION
BAROMETIC PRESSURE	760 mmHg (25°C)
COOLING FAN	X
ALTERNATOR	X
AIR CLEANER	O
MUFFLER	O

PERFORMANCE STANDARARD	SAE J 1995
POWER (MAX , RATED)	213 kW / 1,900 rpm
MAX. TORQUE	1,275 N.m/ 1,500 rpm
FUEL CONSUMPTION (MAX , RATED)	223 g/kW.hr(164 g/ps.hr)



MODEL	DX360LCA-7M DX360LC-7M	DWG No	10/32
-------	---------------------------	--------	-------

### 3. HYDRAULIC SYSTEM

#### 1) MAIN PUMP

MAKER & MODEL : REXROTH, A8VO200D2/63R1  
TYPE : PARALLEL, BENT AXIS, AXIAL PISTON  
QUANTITY : 2  
DISPLACEMENT : 200 cc/rev  
MAX. FLOW RATE : 2 x 350 Liter/min @ 150 bar, 1800 rpm  
WEIGHT : 193 kg

#### 2) PILOT PUMP

MAKER & MODEL : REXROTH  
TYPE : GEAR  
DISPLACEMENT : 13.4 cc/rev(i=0.804)  
MAX. FLOW RATE : 24.12 Liter/min  
RELIEF VALVE PRESSURE : 40 bar(40.8 kgf/cm<sup>2</sup>)

#### 3) CONTROL VALVE

MAKER & MODEL : MOTTROL, DCV500  
TYPE : PILOT CONTROL  
SPOOL DIA. :  $\Phi$ 35 mm  
SPOOL ARRANGEMENT : TRAVEL R, OPT, SWING, BOOM2, ARM1  
TRAVEL L, BUCKET, BOOM1, ARM2  
RELIEF VALVE PRESSURE : 370 bar(377 kgf/cm<sup>2</sup>)  
PORT RELIEF VALVE PRESSURE : 380 bar(387.5 kgf/cm<sup>2</sup>)  
ACCESSARY VALVES : BY-PASS CUT, BOOM HOLDING VALVE,  
ARM HOLDING VALVE, TRAVEL STRAIGHT  
WEIGHT : 444 kg

#### 4) REMOTE CONTROL VALVE; WORK/SWING

MAKER & MODEL : EATON, JB9G3000  
TYPE : PILOT, 1-STAGE, 3-BUTTON  
P vs STROKE CHARACTERISTIC : 6.9 bar (7.0 kgf/cm<sup>2</sup>) @ 1.0mm  
27.5 bar (28.0 kgf/cm<sup>2</sup>) @ 6.5mm  
WEIGHT : 2.4 kg

MODEL	DX360LCA-7M DX360LC-7M	DWG No	11/32
-------	---------------------------	--------	-------

5) REMOTE CONTROL VALVE; TRAVEL				
MAKER & MODEL	:	EATON, JA9D3000		
TYPE	:	PILOT, 1-STAGE, WITH DAMPER		
P vs STROKE CHARACTERISTIC	:	7.4 bar (7.5 kgf/cm <sup>2</sup> ) @ 1.0mm 24.5 bar (25.0 kgf/cm <sup>2</sup> ) @ 4.3mm		
WEIGHT	:	7.8 kg		
6) FAN DRIVE PUMP (OIL COOLER FAN)				
MAKER & MODEL	:	REXROTH, LA10VO18ED 72/53L		
TYPE	:	AXIAL PISTON		
DISPLACEMENT	:	18.0 cc/rev		
MAX. SETTING PRESSURE	:	180 bar		
DIRECTION OF ROTATION	:	CLOCKWISE		
WEIGHT	:	11.5 kg		
7) FAN DRIVE MOTOR (OIL COOLER FAN)				
MAKER & MODEL	:	CASAPPA, PHM20.19R5-55B2		
TYPE	:	GEAR		
DISPLACEMENT	:	19.09 cc/rev		
MAX. OPERATING PRESSURE	:	200 bar		
DIRECTION OF ROTATION	:	CLOCKWISE		
WEIGHT	:	3.9 kg		
8) PACKAGE SOLENOID VALVE				
MAKER & MODEL	:	SUN HYDRAULICS, FA-EXDS50516		
TYPE	:	DC 24V, 4-SOLENOID VALVE		
FUNCTION	:	SAFETY CUT OFF, TRAVEL 2-SPEED HAMMER OPERATING/BREAKER-SHEAR SELECT		
9) ACCUMULATOR				
MAKER & MODEL	:	KHPC, HSB 0.32L		
NITROGEN CHARGE PRESSURE	:	10 bar (10 kgf/cm <sup>2</sup> )		
VOLUME	:	0.32 Liter		
WEIGHT	:	1.6 kg		
MODEL		DX360LCA-7M DX360LC-7M	DWG No	12/32

10) BY-PASS VALVE

10-1) BY-PASS VALVE (C1)

MAKER & MODEL : DKC, BP900-3000  
SIZE : 2-INCH  
CRACKING PRESSURE : 3 bar (3 kgf/cm<sup>2</sup>) @ 10 Liter/min

10-2) BY-PASS VALVE (C2)

MAKER & MODEL : DKC, BP900-6000  
SIZE : 2-INCH  
CRACKING PRESSURE : 6 bar (6 kgf/cm<sup>2</sup>) @ 10 Liter/min

11)HYDRAULIC FILTERS

11-1) RETURN FILTER

MAKER & TYPE : HYDAC, 31.06.17 R 10MM  
FITER MATERIAL : GLASS FIBER  
QUANTITY : 2  
FILTRATION AREA(SIZE) : 1.85 m<sup>2</sup> (Φ152 x 415 mm)  
FILTRATION EFFICIENCY&RATING : 99.5 % (β<sub>10</sub> = 200), 10μ  
BY-PASS CRACKING PRESSURE : 1.5 bar (1.5 kgf/cm<sup>2</sup>) @ 40 Liter/min

11-2) PILOT FILTER

MAKER & TYPE : DY-FILTER, DYF-H9062  
FITER MATERIAL : SYNTHETIC FIBER  
FILTRATION SIZE : Φ48.8 x 84 mm  
FILTRATION EFFICIENCY&RATING : 99.5 % (β<sub>10</sub> = 200), 10μ  
BYPASS CRACKING PRESSURE : 1.7 bar (1.7 kgf/cm<sup>2</sup>)

11-3) SUCTION STRAINER

MAKER & TYPE : DY- FILTER, WIRE MESH  
FILTRATION SIZE : 0.54m<sup>2</sup> (Ø200 x 190 mm)  
FILTRATION RATING : 177μ (80 mesh),

MODEL	DX360LCA-7M DX360LC-7M	DWG No		13/32
-------	---------------------------	--------	--	-------

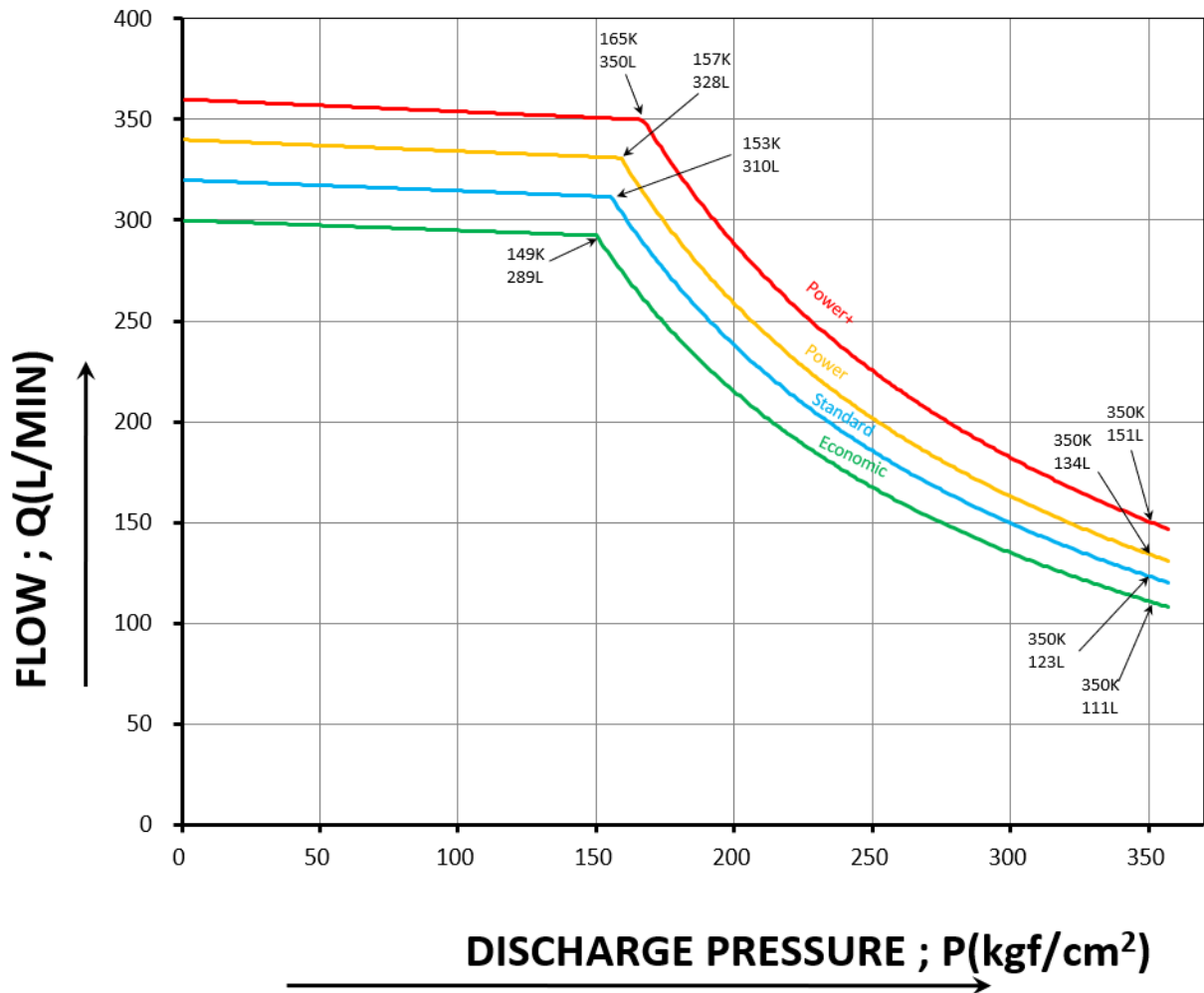
12) AIR BREATHER

MAKER & TYPE : DY-FILTER, PARER ELEMENT  
CRACKING PRESSURE : 0.45 bar (0.46 kgf/cm<sup>2</sup>) @ 1 Liter/min  
VACUUM RELIEF PRESSURE : 0.04 ~ 0.05 bar @ 1 Liter/min  
FILTRATION EFFICIENCY&RATING : 99.5 % ( $\beta_{10} = 200$ ), 10 $\mu$   
FILTRATION SIZE

MODEL	DX360LCA-7M DX360LC-7M	DWG No		14/32
-------	---------------------------	--------	--	-------

- PUMP PERFORMANCE CURVE

CONTENT		UNIT	VALUE
P+ MODE	INPUT rpm	rpm	1,800
	INPUT POWER	kw	196
P MODE	INPUT rpm	rpm	1,700
	INPUT POWER	kw	176
S MODE	INPUT rpm	rpm	1,600
	INPUT POWER	kw	162
E MODE	INPUT rpm	rpm	1,500
	INPUT POWER	kw	147



MODEL	DX360LCA-7M DX360LC-7M	DWG No	15/32
-------	---------------------------	--------	-------

#### 4. SWING MECHANISM

##### 1) SWING MOTOR

MAKER & MODEL	:	Doosan Mottrol, TSM260CHB-10A-01/300
TYPE	:	AXIAL PISTON
DISPLACEMENT	:	260 cc/rev
CROSSOVER RELIEF VALVE SETTING	:	294 bar (300 kgf/cm <sup>2</sup> ) @ 315 Liter/min
MAX. SUPPLY FLOW (@1800 RPM)	:	311Liter/min
MOTOR SHAFT SPEED	:	1,195 rpm
MOTOR SHAFT TORQUE	:	118 kgf.m (1,157 N.m)
ACCESSARY VALVES	:	SWING REACTIONLESS VALVE
WEIGHT	:	86kg

##### 2) SWING REDUCTION GEAR

MAKER	:	DOOSAN MOTTROL, RG2400
DRIVE TYPE	:	2-STAGE PLANETARY GEAR
REDUCTION RATIO	:	19.565
MAX. OUTPUT SPEED	:	61 rpm
MAX. OUTPUT TORQUE	:	2,311 kgf.m (22.7 kN.m)
WEIGHT (INCLUDED MOTOR)	:	470.53 kg

##### 3) PINION GEAR

TYPE	:	SPUR GEAR
GEAR P.C.D.	:	Φ196 mm
No. OF TEETH	:	14
MODULE	:	14

MODEL	DX360LCA-7M DX360LC-7M	DWG No		16/32
-------	---------------------------	--------	--	-------



#### 4) SWING BEARING

MAKER & MODEL	:	SHIN-IL JUNG MIL
TYPE	:	BALL BEARING, INTERNAL GEAR
GEAR P.C.D.	:	Φ1,260 mm
No. OF TEETH	:	90
BALL DIA.	:	Φ38.1 mm
RACE O.D.	:	Φ1,542 mm
RACE HEIGHT	:	122 mm
STATIC THRUST LOAD	:	675,227 kgf
WEIGHT	:	436 kg

#### 5) SWING PERFORMANCE

MAX. SWING SPEED	:	9.5 rpm
MAX. SWING SPEED (EFF.=0.98)	:	9.3 rpm
MAX. SWING TORQUE	:	14,860 kgf.m (146 kN.m)
MAX. SWING TORQUE (EFF.=0.81)	:	12,040 kgf.m (118 kN.m)

#### 6) PARKING BRAKE

CONTROL TYPE	:	PILOT PRESSURE, MECHANICAL
BRAKE TORQUE	:	134 kgf.m (1,314 N.m)
BRAKE RELEASE PRESSURE	:	23 bar (23 kgf/cm <sup>2</sup> )

#### 7) MOTOR ACCESSARY

BRAKE TIME DELAYER	:	6.5 (+1.5/-1.5) sec
SELECT V/V CRACKING PRESSURE	:	6 bar (6 kgf/cm <sup>2</sup> )

MODEL	DX360LCA-7M DX360LC-7M	DWG No		17/32
-------	---------------------------	--------	--	-------

## 5. TRAVEL SYSTEM

### 1) TRAVEL MOTOR

MAKER & MODEL	:	Doosan Mottrol, TM60VD-A-165/270-1
TYPE	:	AXIAL PISTON, 2-SPEED
DISPLACEMENT	:	269.9 / 165 cc/rev
CROSSOVER RELIEF VALVE SETTING	:	350 kgf/cm <sup>2</sup> (343 bar)
MAX. SUPPLY FLOW	:	324 Liter/min @ 1800 rpm
MOTOR SHAFT SPEED	:	1,160 / 1,898 rpm
MOTOR SHAFT TORQUE	:	150.4 / 91.9 kgf.m (1,475 / 901 N.m)
WEIGHT	:	90 kg

### 2) REDUCTION GEAR

TYPE	:	2-STAGE PLANETERY GEAR
REDUCTION GEAR RATIO	:	46.120
MAX. OUTPUT SPEED	:	25 / 41 rpm
MAX. OUTPUT TORQUE	:	6,934 / 4,239 kgf.m (68.0 / 41.6 kN.m)
WEIGHT (INCLUDE MOTOR)	:	405 kg

### 3) SPROCKET

SPROCKET P.C.D.	:	Φ732.81 mm
TRACK LINK PITCH	:	216 mm
No. OF TEETH	:	21
WEIGHT	:	82 kg

### 4) TRAVELLING PERFORMANCE

TRAVELLING SPEED	:	3.4 / 5.6 km/hr
TRAVELLING SPEED (EFF.=98.0%)	:	3.4 / 5.5 km/hr
TRACTION FORCE	:	37.9 / 23.1 ton
TRACTION FORCE (EFF.=81%)	:	30.7 / 18.7 ton
GRADEABILITY	:	70 %

### 5) PARKING BRAKE

CONTROL TYPE	:	MAIN PRESSURE, MECHANICAL
BRAKE TORQUE	:	87 kgf.m (853 N.m)
BRAKE RELEASE PRESSURE	:	8 bar (8.2 ± 1.5 kgf/cm <sup>2</sup> )

MODEL	DX360LCA-7M DX360LC-7M	DWG No		18/32
-------	---------------------------	--------	--	-------

## 6. UNDER CARRIAGE

### 1) RECOIL MECHANISM

MAKER & MODEL	:	Samwoo Tech
TYPE	:	HYDRAULIC ADJUSTED
RECOIL SPRING PRELOAD	:	20,857 kg
RECOIL SPRING MAX. LOAD	:	33,647 kg
RECOIL SPRING STROKE	:	65 mm
ADJUSTER TYPE	:	GREASE CYLINDER
WEIGHT	:	213 kg

### 2) ROLLERS ; LOWER

MAKER & MODEL	:	JIN SUNG
FLANGE TYPE	:	SINGLE
Q'TY PER SIDE	:	9
DIA.	:	Φ180 mm
WEIGHT	:	57.2 kg

### 3) ROLLERS ; UPPER

MAKER & MODEL	:	JIN SUNG
FLANGE TYPE	:	SINGLE
Q'TY PER SIDE	:	2
DIA.	:	Φ142 mm
WEIGHT	:	26.4 kg

### 4) FRONT IDLER

MAKER	:	JIN SUNG
DIA.	:	Φ580 mm
WEIGHT	:	187 kg

MODEL	DX360LCA-7M DX360LC-7M	DWG No		19/32
-------	---------------------------	--------	--	-------

5) TRACK LINK

MAKER & MODEL	:	HYUNDAI STEEL
No. OF LINK PER SIDE	:	48
LINK PITCH	:	216 mm
PIN DIA.	:	Φ44.75 mm
TRACK GUAGE	:	2,680 mm
TUMBLER DISTANCE	:	4,040 mm
WEIGHT (600mmG, Included shoe)	:	1,970 kg
WEIGHT (700mmG, Included shoe)	:	2,160 kg
WEIGHT (800mmG, Included shoe)	:	2,350 kg
WEIGHT (850mmG, Included shoe)	:	2,440 kg
WEIGHT (900mmG, Included shoe)	:	2,540 kg
WEIGHT (600mmDG, Included shoe)	:	2,230 kg

6) TRACK SHOE

MAKER	:	HYUNDAI STEEL
No. OF SHOE PER SIDE	:	48

MODEL	DX360LCA-7M DX360LC-7M	DWG No		20/32
-------	---------------------------	--------	--	-------

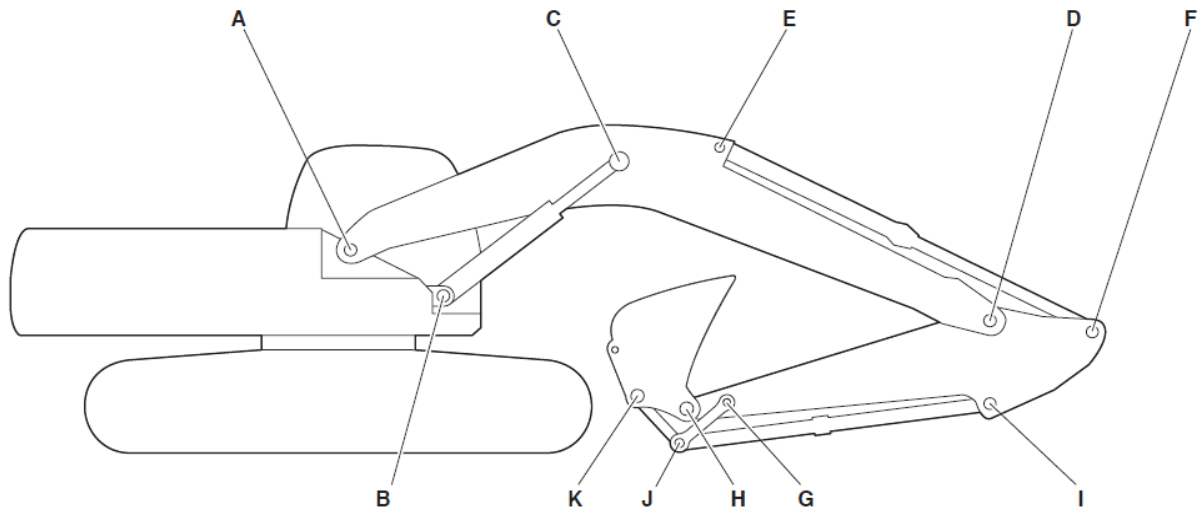
## 7. HYDRAULIC CYLINDERS

	BOOM	ARM	BUCKET
QUANTITY	2	1	1
BORE	150	170	150
STROKE	1,450	1,805	1,300
ROD DIA.	100	120	100
CLOSED LENGTH	2,100	2,415	1,870
HEAD END CUSHION	X	O	X
ROD END CUSHION	O	O	O
MAKER	DONGYANG	DONGYANG	DONGYANG
APPLIED ARM (mm)	-	-	2,600 3,200 3,950
WEIGHT	287 kg	430 kg	270 kg

MODEL	DX360LCA-7M DX360LC-7M	DWG No		21/32
-------	---------------------------	--------	--	-------

## 8. FRONT

### 1) FRONT LINK PIN SIZES



POINT	DIA. (mm)	LENGTH (mm)	Weight (Kg)
A	110	1,046	82.5
B	105	273	21.0
C	100	918	60.5
D	110	587	47.0
E	100	284	20.5
F	100	284	20.5
G	90	515	25.5
H	100	649	36.5
I	100	260	18.5
J	100	509	33.0
K	100	602	36.5

MODEL	DX360LCA-7M DX360LC-7M	DWG No	22/32
-------	---------------------------	--------	-------

2) FRONT ATTACHMENTS

2-1) BOOM

	LENGTH (mm)	WEIGHT (kg)
STD. BOOM	6,500	2690
HD. BOOM	6,500	2785
Short Boom	6,200	2630

2-2) ARM

	LENGTH (mm)	WEIGHT (kg)	DIGGING FORCE (NOM./PRESS.UP, ton)
STD. ARM	3,200	1,285	[SAE] 17.6 / 18.6 , [ISO] 17.9 / 19.0 → 176 / 186 [kN]
SHORT ARM	2,600	1,170	[SAE] 21.6 / 22.8 , [ISO] 22.1 / 23.4 → 217 / 229 [kN]
LONG ARM	3,950	1,496	[SAE] 14.9 / 15.8 , [ISO] 15.1 / 16.0 → 148 / 157 [kN]
HD. ARM	3,200	1,365	[SAE] 17.6 / 18.6 , [ISO] 17.9 / 19.0 → 176 / 186 [kN]

MODEL	DX360LCA-7M DX360LC-7M	DWG No	23/32
-------	---------------------------	--------	-------

2-3) BUCKET

Bucket Type	CAPACITY (m <sup>3</sup> )			BUCKET WIDTH (mm)		WEIGHT (kg)	DIGGINGFORCE (NOM./PRESS.UP, ton)
	CECE	SAE	Struck	W/ Cutter	W/O Cutter		
G.P.	1.10	1.25		1278	1228	1249	[SAE] 21.7/22.9 [ISO] 24.5/25.9
	1.12	*1.28		-	1382	1427	
	1.30	1.49		1460	1410	1344	
	1.41	1.61		1550	1500	1392	
	1.60	1.83		1718	1668	1522	
H Class	1.30	1.44		1272	1238	1389	[SAE] 22.3/23.6 [ISO] 24.7/26.1
	1.49	1.66		1428	1394	1489	
	1.61	1.81		1534	1500	1588	
	1.80	2.03		1684	1650	1684	
	1.80	**2.03		1684	1650	1820	
	2.05	2.32		1892	1858	1817	
S Class	1.40	1.56		-	1352	1893	[SAE] 21.7/22.9 [ISO] 24.7/26.1
	1.53	***1.71		-	1452	2104	
	1.53	1.71		-	1452	1973	
	1.71	1.92		-	1602	2094	
	1.96	2.22		-	1809	2309	
X Class	1.40	1.56		1370	1352	2050	
	1.53	1.71		1470	1452	2136	

\*: Rock Bucket \*\* : H+ Class \*\*\* : S+ Class

MODEL	DX360LCA-7M DX360LC-7M	DWG No		24/32
-------	---------------------------	--------	--	-------



2-4) BUCKET & ARM COMBINATIONS

Bucket Type	Capacity (m <sup>3</sup> )	Bucket Width (mm)		Weight (Kg)	6.5 MONO Boom			6.2 MONO Boom
		W/Cutter	W/O Cutter		2.6A	3.2A	3.95A	2.6A
G.P	1.25	1278	1228	1249	A	A	A	A
	*1.28	-	1382	1427	A	A	A	A
	1.49	1460	1410	1344	A	A	B	A
	1.61	1550	1500	1392	A	B	C	A
	1.83	1718	1668	1522	B	C	D	A
H Class	1.44	1272	1238	1389	A	A	B	A
	1.66	1428	1394	1489	A	B	C	A
	1.81	1534	1500	1588	B	C	D	A
	2.03	1684	1650	1684	C	D	D	B
	**2.03	1684	1650	1820	C	D	-	B
	2.32	1892	1858	1817	D	D	-	C
S Class	1.56	-	1352	1893	A	C	D	A
	***1.71	-	1452	2104	B	C	-	B
	1.71	-	1452	1973	B	C	D	A
	1.92	-	1602	2094	C	D	-	B
	2.22	-	1809	2309	D	-	-	D
X Class	1.56	1370	1352	2050	B	C	D	A
	1.71	1470	1452	2136	B	D	-	B

\*: Rock Bucket \*\* : H+ Class \*\*\* : S+ Class

Based on ISO 10567 and SAE J296, arm length without quick change clamp

A : Suitable for materials with density of 2,100kg/m<sup>3</sup> (3,500lb/yd<sup>3</sup>) or less

B : Suitable for materials with density of 1,800kg/m<sup>3</sup> (3,000lb/yd<sup>3</sup>) or less

C : Suitable for materials with density of 1,500kg/m<sup>3</sup> (2,500lb/yd<sup>3</sup>) or less

D : Suitable for materials with density of 1,200kg/m<sup>3</sup> (2,000lb/yd<sup>3</sup>) or less

- : Not recommended

MODEL	DX360LCA-7M DX360LC-7M	DWG No		25/32
-------	---------------------------	--------	--	-------

3) OPTION PIPINGS

3-1) ONE-WAY PIPING

MAIN & PILOT PIPING : OPTION  
FRONT SUPPLY PIPING : OPTION  
AVAILABLE ATTACHMENT : BREAKER

3-2) TWO-WAY PIPING

MAIN & PILOT PIPING : OPTION  
FRONT SUPPLY PIPING : OPTION  
AVAILABLE ATTACHMENT : BUCKET TILT CYLINDER, CLAMSHELL  
CRUSHER

3-3) ROTATING PIPING

MAIN & PILOT PIPING : OPTION  
FRONT SUPPLY PIPING : OPTION  
AVAILABLE ATTACHMENT : ROTATING GRAPPLE

3-4) AGS SYSTEM (AUTO GREASING SYSTEM)

MAKER : SKF

APPLIED GREASE SPEC

- SPECIES: LITHIUM EP GREASE OR EQUIVALENT
- NLGI GRADE : 2 GRADE

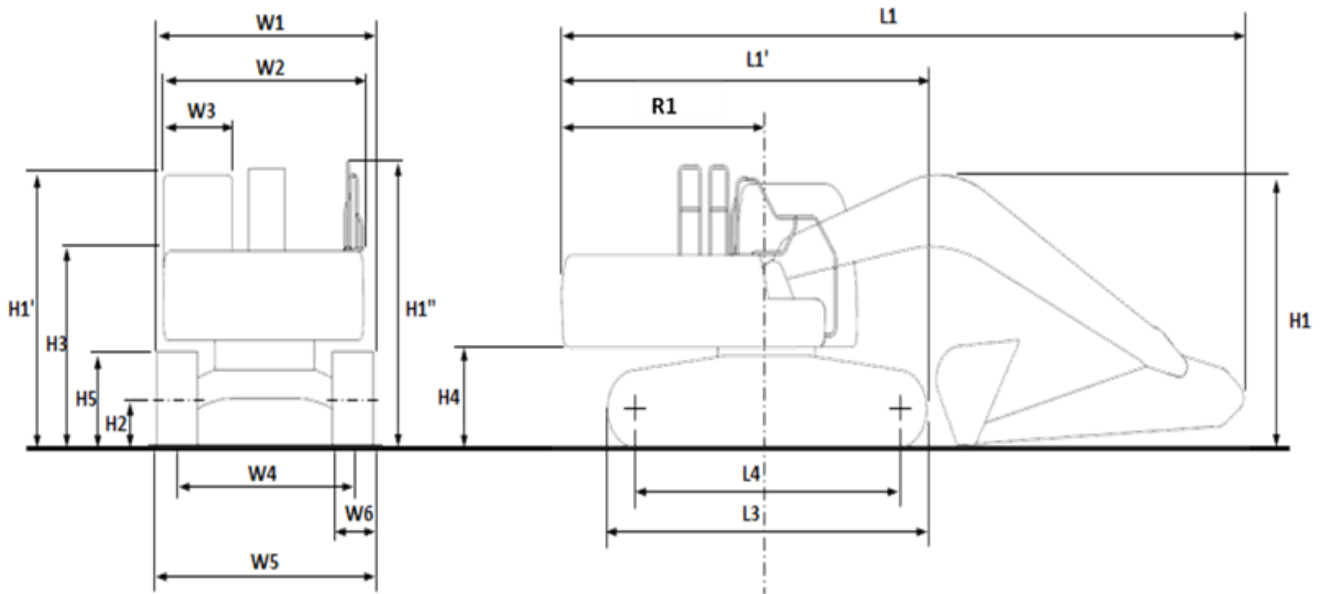
PUMP

- MAX. OPERATING PRESSURE : 300 BAR
- RESEVIOR CAPACITY : 6.3 LITER
- OPERATING TIME : 12MIN
- OPERATING INTERVAL TIME : 1HR
- IP GRADE : IP 56

MODEL	DX360LCA-7M DX360LC-7M	DWG No		26/32
-------	---------------------------	--------	--	-------

# 9. DIMENSIONS AND WORKING RANGE

## 1) DIMENSIONS(One-piece BOOM)

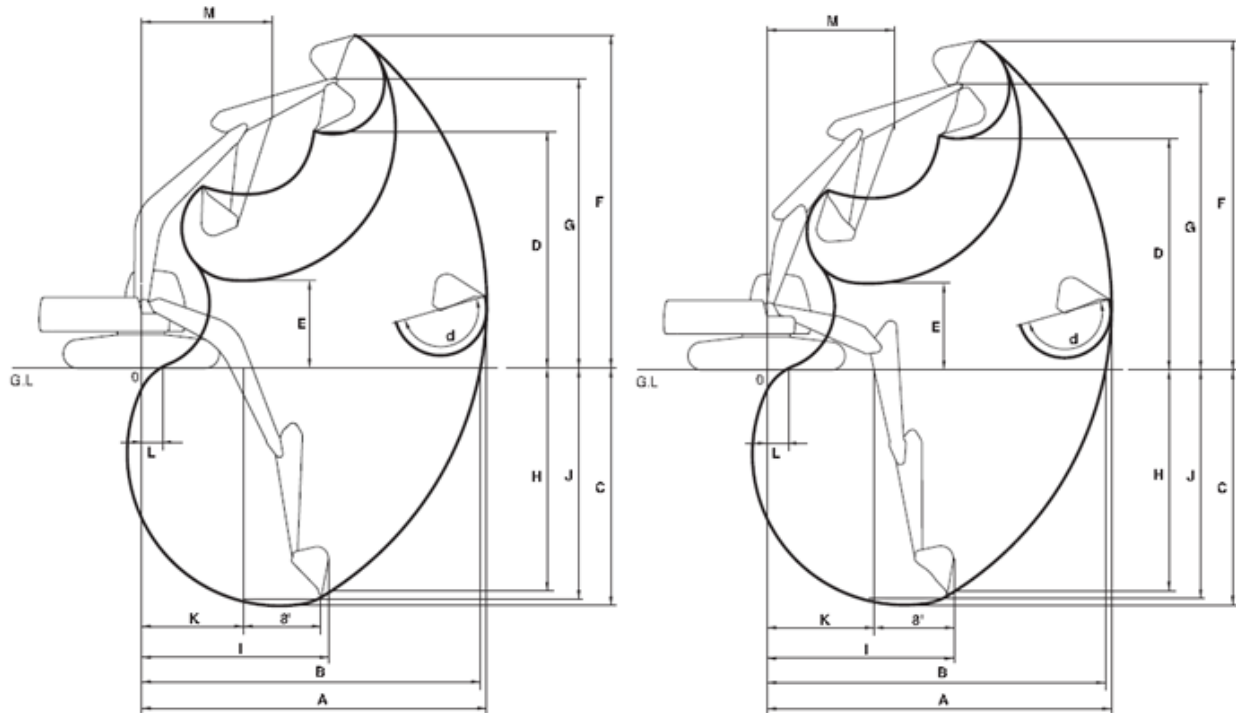


Model			VMK34(T2/T3)								
Dimension			STD		OPT1		OPT2		OPT3		
Boom			6.5 HD		6.5 HD		6.5		6.2		
Arm			3.2 HD		2.6		3.95		2.6		
Bucket			1.81 R2H		2.03 R2H		1.44 R2H		2.03 R2H		
Undercarriage (Track+Grouser)			LC 600 TG		LC 600 TG		LC 600 TG		LC 600 TG		
Overall	L1	Overall Length	11,315	(37' 1")	11,405	(37' 5")	11,343	(37' 3")	11,105	(36' 5")	
	H1	Overall Height	Boom	3,255	(10' 8")	3,495	(11' 6")	3,315	(10' 11")	3,605	(11' 10")
			Hose	3,420	(11' 3")	3,640	(11' 11")	3,565	(11' 8")	3,705	(12' 2")
			Cabin	3,100	(10' 2")	3,100	(10' 2")	3,100	(10' 2")	3,100	(10' 2")
	W1	Overall Width(SHIPPING)	3,280	(10' 9")	3,280	(10' 9")	3,280	(10' 9")	3,280	(10' 9")	
	R1	Rear Swing Radius	3,530	(11' 7")	3,530	(11' 7")	3,530	(11' 7")	3,530	(11' 7")	
H2	Ground Clearance*	*475	(1' 7")	*475	(1' 7")	*475	(1' 7")	*475	(1' 7")		
Swing Body	W2	House Width	Frame only	2,990	(9' 10")	2,990	(9' 10")	2,990	(9' 10")	2,990	(9' 10")
			w/Protector	3,103	(10' 2")	3,103	(10' 2")	3,103	(10' 2")	3,103	(10' 2")
	W3	Cabin Width	1,010	(3' 4")	1,010	(3' 4")	1,010	(3' 4")	1,010	(3' 4")	
	H3	Height Over Cover	2,240	(7' 4")	2,240	(7' 4")	2,240	(7' 4")	2,240	(7' 4")	
H4	Counterweight Clearance*	*1,160	(3' 10")	*1,160	(3' 10")	*1,160	(3' 10")	*1,160	(3' 10")		
Undercarriage	H5	Track Height*	*970	(3' 2")	*970	(3' 2")	*970	(3' 2")	*970	(3' 2")	
	L3	Track Length	*4,960	(16' 3")	*4,960	(16' 3")	*4,960	(16' 3")	*4,960	(16' 3")	
	L4	Tumbler Distance	4,040	(13' 3")	4,040	(13' 3")	4,040	(13' 3")	4,040	(13' 3")	
	W5	Undercarriage Width	STD	3,280	(10' 9")	3,280	(10' 9")	3,280	(10' 9")	3,280	(10' 9")
	W6	Shoe Width	600	(1' 12")	600	(1' 12")	600	(1' 12")	600	(1' 12")	
	-	Grouser Height	36	(0' 1")	36	(0' 1")	36	(0' 1")	36	(0' 1")	
CAB	-	Cabin Height (H1'-H3)	853	(2' 10")	853	(2' 10")	853	(2' 10")	853	(2' 10")	

\* : without grouser

MODEL	DX360LCA-7M DX360LC-7M	DWG No	27/32
-------	---------------------------	--------	-------

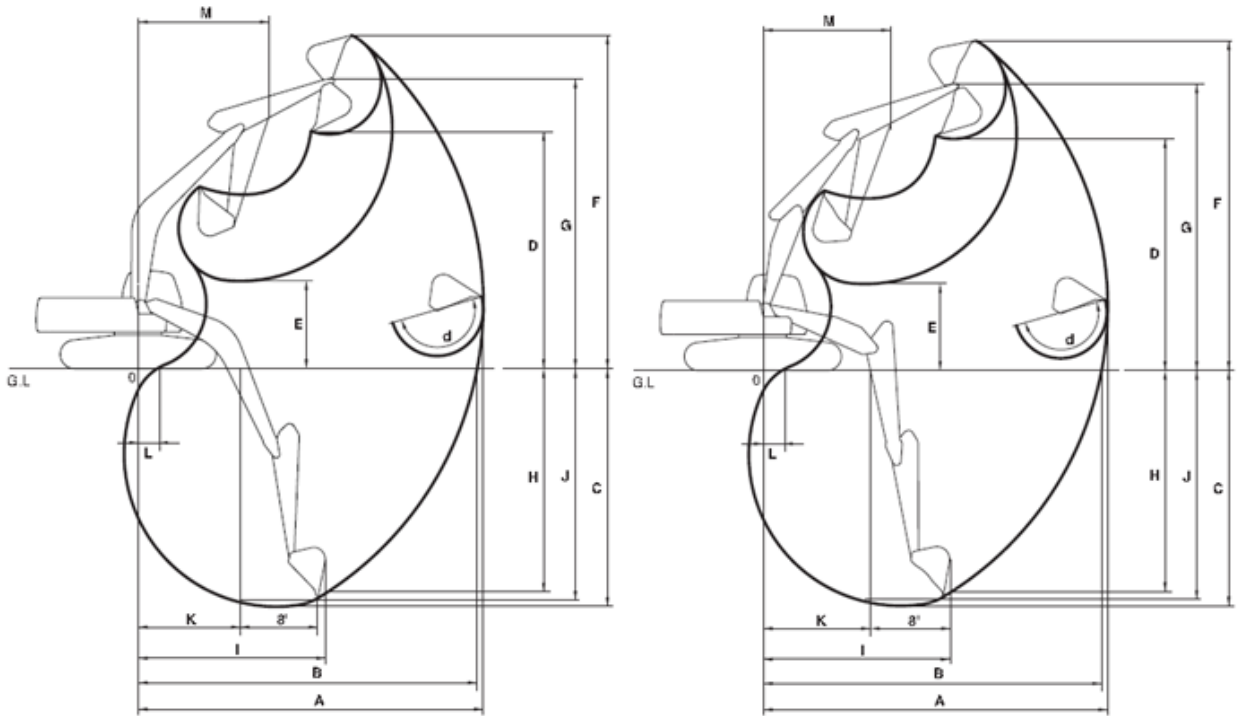
## 2) WORKING RANGE [METRIC]



BOOM TYPE (ONE PIECE)	(mm)		6,500			6,200
ARM TYPE	(mm)		2,600	3,200	3,950	2,600
BUCKET TYPE (SAE)	(m <sup>3</sup> )		2.03 H	1.81 H	1.44 H	2.03 H
MAX. DIGGING REACH	(mm)	A	10,540	11,120	11,930	10,235
MAX. DIGGING REACH (GROUND)	(mm)	B	10,325	10,920	11,740	10,020
MAX. DIGGING DEPTH	(mm)	C	6,885	7,485	8,290	6,670
MAX. LOADING HEIGHT	(mm)	D	8,605	7,220	7,635	6,640
MIN. LOADING HEIGHT	(mm)	E	3,380	2,755	2,000	3,105
MAX. DIGGING HEIGHT	(mm)	F	9,910	10,215	10,815	9,585
MAX. BUCKET PIN HEIGHT	(mm)	G	8,605	8,875	9,335	8,295
MAX. VERTICAL WALL DEPTH	(mm)	H	3,715	4,020	6,830	3,525
MAX. RADIUS VERTICAL	(mm)	I	8,760	9,265	9,885	8,530
MAX. DEPTH TO 8' LINE	(mm)	J	6,650	7,295	8,155	6,430
MIN. RADIUS 8' LINE	(mm)	K	3,260	3,310	3,380	3,045
MIN. DIGGING REACH	(mm)	L	2,245	795	-290	1,825
MIN. SWING RADIUS	(mm)	M	4,445	4,455	4,515	4,325
BUCKET ANGLE	(deg)	d	178.4	178.4	178.4	178.4

MODEL	DX360LCA-7M DX360LC-7M	DWG No		28/32
-------	---------------------------	--------	--	-------

### 3) WORKING RANGE [FEET]



BOOM TYPE (ONE PIECES)	(ft-in)		21' 4"			20' 4"
ARM TYPE	(ft-in)		8' 6"	10' 6"	12' 11"	8' 6"
BUCKET TYPE (SAE)	( yd <sup>3</sup> )		2.66H	2.37H	1.88H	2.66H
MAX. DIGGING REACH	(ft-in)	A	34' 7"	36' 6"	39' 2"	33' 7"
MAX. DIGGING REACH (GROUND)	(ft-in)	B	33' 10"	35' 10"	38' 6"	32' 10"
MAX. DIGGING DEPTH	(ft-in)	C	22' 7"	24' 7"	27' 2"	21' 11"
MAX. LOADING HEIGHT	(ft-in)	D	28' 3"	23' 8"	25' 1"	21' 9"
MIN. LOADING HEIGHT	(ft-in)	E	11' 1"	9' 1"	6' 7"	10' 2"
MAX. DIGGING HEIGHT	(ft-in)	F	32' 6"	33' 6"	35' 6"	31' 5"
MAX. BUCKET PIN HEIGHT	(ft-in)	G	28' 3"	29' 1"	30' 8"	27' 3"
MAX. VERTICAL WALL DEPTH	(ft-in)	H	12' 2"	13' 2"	22' 5"	11' 7"
MAX. RADIUS VERTICAL	(ft-in)	I	28' 9"	30' 5"	32' 5"	27' 12"
MAX. DEPTH TO 8' LINE	(ft-in)	J	21' 10"	23' 11"	26' 9"	21' 1"
MIN. RADIUS 8' LINE	(ft-in)	K	10' 8"	10' 10"	11' 1"	9' 12"
MIN. DIGGING REACH	(ft-in)	L	7' 4"	26' 1"	-0' 11"	5' 12"
MIN. SWING RADIUS	(ft-in)	M	14' 7"	14' 7"	14' 10"	14' 2"
BUCKET ANGLE	(deg)	d	178.4	178.4	178.4	178.4

MODEL	DX360LCA-7M DX360LC-7M	DWG No		29/32
-------	---------------------------	--------	--	-------

## 10. LIFTING CAPA.

- Ref. Attached file

## 11. PERFORMANCE DATA

### 1) MAIN RELIEF PRESSURE

WORKING, TRAVEL : 343 bar [+10/0] (350 [+10/0] kg/cm<sup>2</sup>)  
 PRESSURE UP : 363 bar [+10/0] (370 [+10/0] kg/cm<sup>2</sup>)

### 2) ACTUATOR SPEED

OPERATION		UNIT	S MODE	P MODE	P+ MODE	E MODE
BOOM	UP	SEC	3.6 ± 0.4	3.4 ± 0.3	3.2 ± 0.3	
	DOWN	SEC	2.4 ± 0.3	2.3 ± 0.2	2.3 ± 0.2	
ARM	CROWD	SEC	4.3 ± 0.4	4.1 ± 0.4	3.9 ± 0.4	
	DUMP	SEC	3.7 ± 0.4	3.5 ± 0.3	3.5 ± 0.3	
BUCKET	CROWD	SEC	3.7 ± 0.4	3.5 ± 0.3	3.4 ± 0.3	
	DUMP	SEC	2.8 ± 0.3	2.6 ± 0.3	2.1 ± 0.2	
SWING (3 REVOLUTIONS)		SEC	21.0 ± 2.1	19.8 ± 2.0	19.0 ± 1.9	22.2 ± 2.2
JACK-UP SPEED (3 TURNS)	LOW	SEC	36.8 ± 3.7	34.5 ± 3.4	32.8 ± 3.3	
	HIGH	SEC	22.6 ± 2.3	21.3 ± 2.1	20.0 ± 2.0	
TRAVEL SPEED (20 m)	LOW	SEC	24.2 ± 2.4	22.7 ± 2.3	21.3 ± 2.1	
	HIGH	SEC	15.0 ± 1.5	14.0 ± 1.4	13.3 ± 1.3	
TRAVEL DEVIATION (20 m)	LOW	mm	MAX. 150	MAX. 150	MAX. 150	
	HIGH	mm	MAX. 150	MAX. 150	MAX. 150	

## 12. NOISE LEVEL

### 1) DX360LCA-7M (Tier2)

**L<sub>WA</sub>** GUARANTEED SOUND POWER LEVEL : 110 dB(A) (2000/14/EC)  
 MEASURED SOUND POWER LEVEL : 109 dB(A) (2000/14/EC)  
**L<sub>pA</sub>** OPERATOR NOISE : 74 dB(A) (ISO 6396)

### 2) DX360LC-7M (Tier3)

**L<sub>WA</sub>** GUARANTEED SOUND POWER LEVEL : 106 dB(A) (2000/14/EC)  
 MEASURED SOUND POWER LEVEL : 105 dB(A) (2000/14/EC)  
**L<sub>pA</sub>** OPERATOR NOISE : 73 dB(A) (ISO 6396)

MODEL	DX360LCA-7M DX360LC-7M	DWG No		30/32
-------	---------------------------	--------	--	-------

### 13. SUB GROUP WEIGHT

ITEM		UNIT	FIGURE	REMARKS	
SUPER STRUCTURE W/O FRONT(T2/T3)		kg	17,400/ 17,550	WITH COUNTER WEIGHT	
COUNTER WEIGHT		kg	7,100		
LOWER STRUCTURE ASS'Y (600mm TG)		kg	12,100		
FRONT ASS'Y		kg	7,885		
BOOM (6.5m)		kg	2,965	WITH BUSH	
ARM (3.2m)		kg	1,350	WITH BUSH	
BUCKET (1.81m3 H Class)		kg	1,615		
BOOM CYL. (ea)		kg	300		
ARM CYL.		kg	443		
BUCKET CYL.		kg	270		
OPTION	BOOM	6.2m	kg	2,905	
		6.5m HD	kg	3,060	
	ARM	2.6m	Kg	1,230	
		3.95m	kg	1,540	
		3.2m HD	kg	1,430	

MODEL	DX360LCA-7M DX360LC-7M	DWG No		31/32
-------	---------------------------	--------	--	-------

## 14. USER SERVICE DATA

No.	Items to check	Service	Qty.	Service interval [hours]						
				10	50	250	500	1,000	2,000	4,500
1	Arm, Bucket Joint Pin <sup>1)</sup>	Grease	6	F100	W10					
2	Boom, Arm Joint Pin <sup>1)</sup>	Grease	11	F100		W10				
3	Swing Bearing <sup>1)</sup>	Grease	3		W10					
4	Pinion Gear (Swing)	Grease	1							
5	Swing Reduction Gear	Grease	1					W10		
		Gear Oil	8 L	V			F			
6	Track Spring	Grease	2				W10,V			
7	Travel Reduction Gear	Gear Oil	2 x 7 L				F, V			
8	Engine Oil (T2/T3)	Engine Oil	31 L / 33 L	V						
9	Hydraulic Oil Tank <sup>2)</sup>	Hydraulic Oil	380(243) L	V						
10	Fuel Tank <sup>3)</sup>	Diesel	600(590) L	V	D					
11	Pre Fuel Filter and Water Separator	Cartridge	1	V, D						
12	Additional Water Separator	Striner	1	V, D			C			
13	Coolant (T2/T3)	Coolant	65.6 L / 63.3 L	V						
14	Hydraulic Oil Return Filter	Element	2			F				
15	Pilot Filter	Element	1			F				
16	Hydraulic Oil Suction Strainer	Strainer	1						C	
17	Engine Oil Filter	Cartridge	1							
18	Main Fuel Filter	Cartridge	1							
18	Air Cleaner (Outer)	Element	1				C			
19	Air Cleaner (Inner)	Element	1							
19	Air Conditioner Filter (Outer)	Element	1				C			
20	Air Conditioner Filter (Inner)	Element	1				C			
21	Air Breather Filter	Element	1							
22	Fuel Cap Filter	Element	1							
23	Breaker Filter (Opt)	Cartridge	1							
24	Air Compressor Filter (Opt)	Cartridge	1				C			
25	Oil Bath Pre cleaner (Opt)	Engine Oil	9.5 L			V, C				
	Radiator Core	Core	1				C			
	Fuel cooler Core	Core	1				C			
	Oil Cooler Core	Core	1				C			
	Intercooler Core	Core	1				C			
	Aircon Condenser Core	Core	1				C			

V: Maintenance and Refill

C: Cleaning

D: Drain Water

F: First Time Exchange Only

F100: Every 10 Hours For First 100 Hours

W10: Every 10 Hours If Operating In Water

☐ : Replacement On Every Interval

1) If Auto Grease System (optional) is equipped, check and refill the system

2) Total Tank Capacity(Level)

3) Total Tank Capacity(max. possible refueling volume)

## 15. CIRCUITS

- HYDRAULIC CIRCUIT : 950102-00849B

- ELECTRIC CIRCUIT : 950102-00850A

MODEL	DX360LCA-7M DX360LC-7M	DWG No	32/32
-------	---------------------------	--------	-------